

NOVOS 2017

Dorthe Hansen
Anicura Dyresykehuset Bergen Nord

How I manage CCL ruptures in small dogs and cats

Treatment options in small dogs

- Conservative
- Fascia latae
- Fabelotibial suture
- Tightrope
- TTA, CWO + other corrective procedures
- TPLO

TPLO in small dogs

- Advantages
 - All breeds/sizes
 - No Anatomical restrictions
 - Steep TPA
 - Concomitant patella luxation
 - Fast recovery
 - Predictable long term result
- Disadvantages
 - Technical demanding
 - Assistant needed
 - High case load
 - Steep learning curve
 - Expensive and specialized equipment

Clinical audit for the tibial tuberosity advancement procedure

Establishing the learning curve and monitoring ongoing performance for the tibial tuberosity advancement procedure using the cumulative summation technique

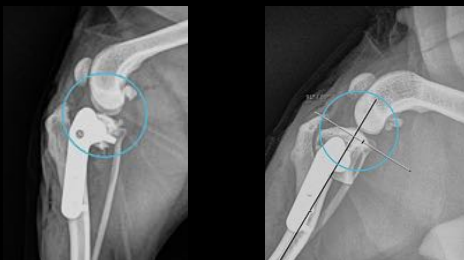
J. L. J. Probst, S. A. Coet
Cotnam Hill, St. Lawrence, West Yorkshire, UK, *Visiting Lecturer, School of Veterinary Medicine and Science, University of Nottingham, Sutton Bonington, UK*

Intraoperative considerations

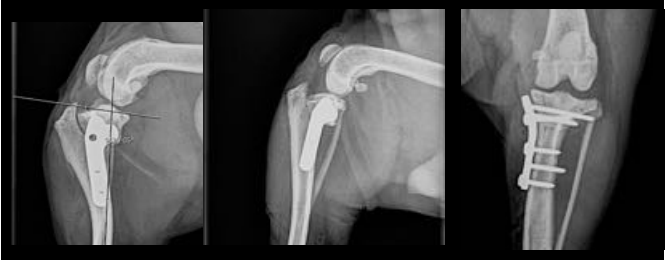
- Correct jig pin size
- Correct jig pin placement
- Stable padding
- "Safe" rotation



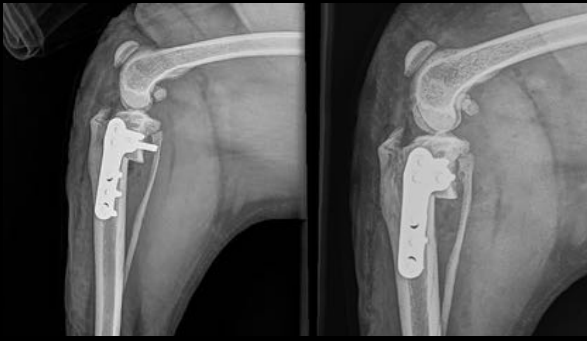
Intra operative challenges



Cranial screw



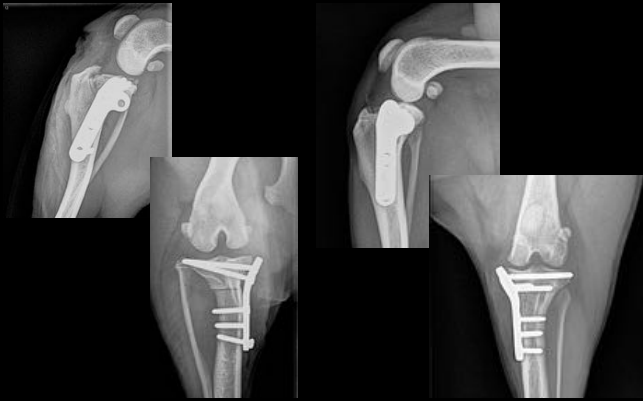
Caudal Screw



Caudal displacement/lack of compression



Long screws



Pre op subluxation/additional stabilization



Post operative complications

- Infections rate as with larger dogs < 2,5%
- Delayed healing
- Atrophic healing
- Patella tendinitt
- Fibula fracture

Delayed healing



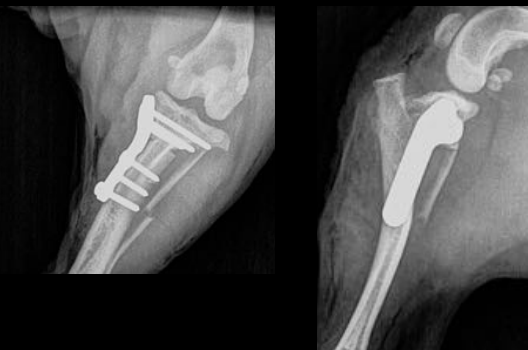
Atrophic healing



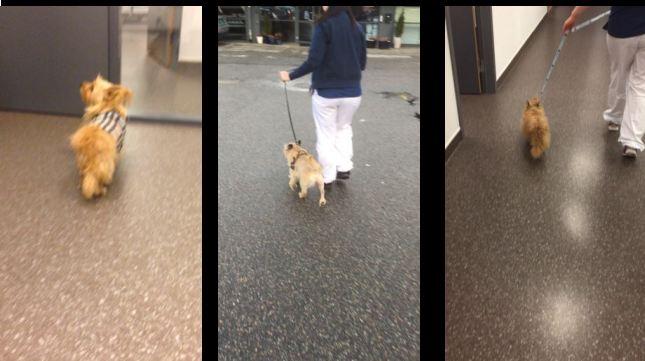
Patella tendinitis



Fibula fracture



Results



CCL Cats

- Total stifle joint disruption
 - Trauma
 - Concomitant injuries such as meniscal damage, caudal cruciate rupture, collateral ligament rupture
- Isolated injuries
 - Overweight cats
 - Middle age/older cats
 - Degenerative signs/intraarticular calcifications

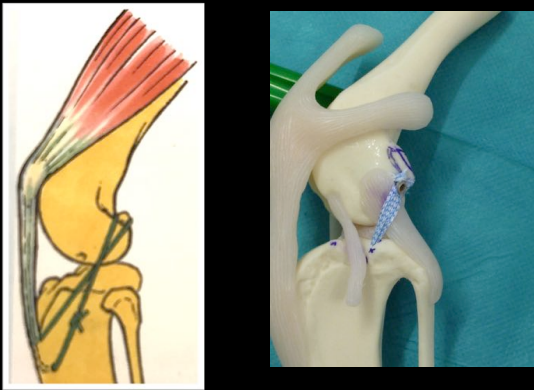
Preoperative evaluation



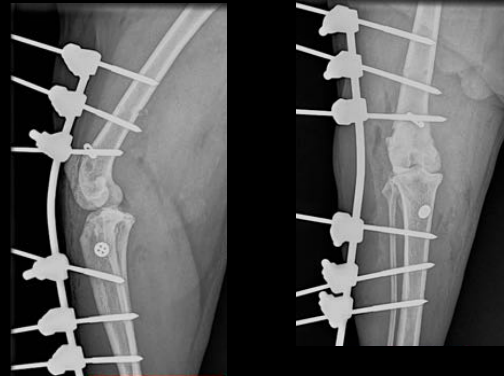
Treatment regime for isolated CCL

- Conservative
 - Weight loss
 - In house
 - NSAID
 - j/d
 - Disease modifying agents
- Surgical
 - Young active cats
 - No response to conservative treatment after 3 weeks
 - Very unstable joints
 - If other injuries on same or opposite leg.

Surgical treatment



Surgical treatment



Surgical treatment



Prognosis

- Weight loss important
- Isolated cruciate ruptures – good prognosis
- Concomitant injuries – always decreased ROM and OA